



**ELECTRICAL FURNITURE**  
P R O D U C T C A T A L O G U E

Integrating technology into furniture with elegantly functional solutions



**D4 is a brand of Design 4 Technologies (Pty) Ltd, a level 2 BEE company which was established in 2010. D4 leads the industry with approval by the South African National Regulator of Compulsory Standards (NRCS)**



## WHAT WE DO

D4 specializes in customised electrical furniture, bringing electrical power and data services to your desktop. D4's integration solutions are both stylish and functional.

## OUR SOLUTION APPROACH

### On Desk

With the advent of 'hot desking', laptops and smart phones, access to electrical fittings and data services on top of the desk is becoming a requirement.

### In Desk

Solutions offer easy access with low profile or fold-away outlets that are unobtrusive and aesthetically pleasing.

### Under Desk

Ideal for applications such as call centres or where the CPU is installed under the desk and for bench desk systems.

## OUR PRODUCTS

We offer customised, quick turnaround, quality products that are designed and built in South Africa. Our patented products meet and exceed all South African Safety regulations. Approved by NRCS (South African National regulator for compulsory specifications). All product ranges are manufactured from high grade anodised aluminium, designed with an emphasis on aesthetics and compactness. Metallic housing give power sets a robust durability.

### Modular Design

The Modular Design of the D4 range is 11 fully customisable ranges with 12 different power outlet configurations and 9 different data/auxiliary outlet options. The integrated solutions can be re-arranged and adapted to suit specific requirements.

### OEM

D4 offers furniture manufacturers the opportunity to design a specific once-off custom solution for full integration into their desking ranges.



Electrical furniture specialists. Integrating technology into furniture with elegantly functional solutions



Patents pending.  
Designed and manufactured in South Africa.

The Dot is a complimentary addition to any workstation customised to your choice.  
Fits standard 80 mm grommet hole with a quick and easy installation.  
Custom length supply cord (4 meter standard).

## SOCKET OUTLETS

- South African 16 Amp 3 pin
- South African Compact (SANS 164-2)
- Twin USB 2.1 Amp Fast Charge

## ELECTRICAL SPECIFICATIONS

- Operating Voltage: 220 - 240 V AC 50/60 Hz
- Max Current 16 A
- Max Power 3500 W

## DOT COLOURS



**Stainless Steel**  
(black insert)



**Stainless Steel**  
(white insert)

## DOT PRO COLOURS



**Black**  
(black insert)



**White**  
(white insert)



# Dot Evo

The Dot Evo is a complimentary addition to any workstation customised to your choice.

Fits standard 80 mm grommet hole with a quick and easy installation.

Custom length supply cord (4 meter standard).

## USB OUTLETS

Both USB A+C with a total of 30W shared power output

- USB-A Quick Charger technology (QC) max 10W
- USB-C Power Delivery technology (PD) max 30W (USB-C PB)

## MAINS SOCKET OUTLETS

- South African 16 Amp 3 pin
- South African Compact (SANS 164-2)
- Operating Voltage: 220 - 240 V AC 50/60 Hz
- Max Current 16 A
- Max Power 3500 W

## DOT EVO COLOURS



**Black**  
(black insert)



**White**  
(white insert)



**Stainless Steel**  
(black insert)



**Stainless Steel**  
(white insert)



Sleek, minimalist design adds a stylish touch to any professional environment.

The MicroDot provides you with an easy and efficient access to charge any smart device in your home or office.

## MODULES

### Socket outlets

- South African Compact (SANS 164-2)



## USB MODULES

### USB C Module

- USB - PD 5V/3A (15W) ; 9V/2.22A (20W) ; 12V/1.67A (20W)
- USB - QC 3.0/2.0 5V/3A (15W) ; 9V/2A (18W) ; 12V/1.5A (18W)



### USB A Module

- USB - PD 5V/3A (15W) ; 9V/2.22A (20W) ; 12V/1.5A (18W)
- USB - QC 3.0 QC 3.0/2.0 5V/3A (15W) ; 9V/2A (18W) ; 12V/1.5A (18W)



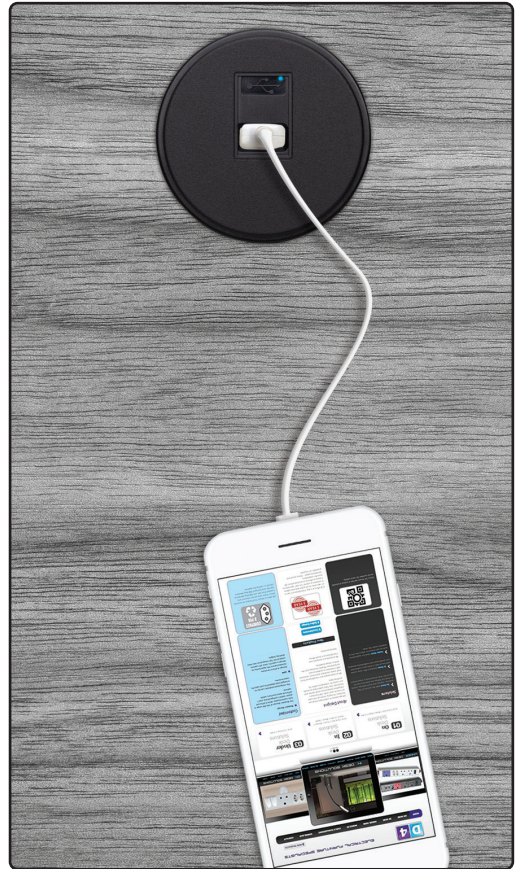
Available in Graphite or Titanium

## WIRELESS QI CHARGER

- 10 Watt
- Qi Compatible



Available in Black or White



## WIRED OPTIONS



Daisy Chain Connector



Direct Wired Cord

Cut-out size  $\phi$  58mm. Max. top thickness 35mm.



[www.d-4.co.za](http://www.d-4.co.za)

# Grid Range

The essential styling offers a clean, functional presence with an almost limitless selection of customised options to meet the individual needs.

The Grid Range increases efficiency and can suit any office environment with an anodised aluminium body for strong and robust durability.

Single and dual power circuits for dedicated applications (two completely independent circuits within a single housing).

Through wiring to allow for "daisy chain" installations via interconnect leads and splitter block.

## Installation mounting options:

- On Desk
- Under Desk
- "Peep-through" Desk

## MODULES

### Power modules:

- Standby Switch
- Overload switch
- Circuit breaker
- **Socket outlets**
  - South African 16 Amp 3 pin
  - South African Dedicated (3 versions)
  - South African Compact (SANS 164-2)
  - South African Compact Dedicated Sockets (SANS 164-2-1) (3 versions)
  - British
  - Shucko (Export orders only)

### Data / auxiliary modules:

- Cat 5e
- Cat 6
- USB 3.0 Type C
- USB 2.4 Amp dual charger
- VGA
- F-type
- RCA
- HDMI
- Display port

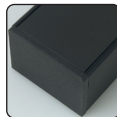


## OPTIONS

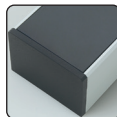
### Standard Body Colours:



**Polar**  
Anodised silver body with white end caps



**Graphite**  
Texture powder coated black body with black end caps.



**Titanium**  
Anodised silver body with black end caps.

### Metal end plate options::



End plate with 2 holes



End plate with big hole



End plate vertical



End plate



# Pivot Range

This flip-up power unit fits horizontally into the work surface giving it the ability to tilt up exposing all the sockets.

The unit can be closed while the plugs are still attached freeing up work space.

A brush strip allows for the cables to exit the unit whilst in closed position.

Ideal for high-end boardroom tables.

Through wiring to allow for "daisy chain" installations via interconnect leads and splitter block.



## MODULES

### Power modules:

- Standby Switch
- Overload switch
- Circuit breaker
- **Socket outlets**
  - South African 16 Amp 3 pin
  - South African Dedicated (3 versions)
  - South African Compact (SANS 164-2)
  - South African Compact Dedicated Sockets (SANS 164-2-1) (3 versions)
  - British
  - Shucko (Export orders only)

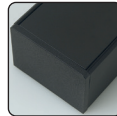
### Data / auxiliary modules:

- Cat 5e
- Cat 6
- USB 3.0 Type C
- USB 2.4 Amp dual charger
- VGA
- F-type
- RCA
- HDMI
- Display port



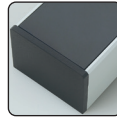
## OPTIONS

### Standard Body Colours:



#### Graphite

Texture powder coated black body with black end caps and black brush strip.



#### Titanium

Anodised silver body with black end caps.

### Standard combination H:

- 1 x Illuminated overload switch
- 2 x South African sockets
- 2 x South African compact sockets
- 1 x HDMI module
- 2 x Data CAT 6 modules
- 1 x Splitter connector



### Standard combination V:

- 1 x Illuminated overload switch
- 1 x South African socket
- 2 x South African compact sockets
- 1 x HDMI module
- 1 x VGA + Audio module
- 2 x Data CAT 6 modules
- 1 x Splitter connector



Custom Sizes are available.



[www.d-4.co.za](http://www.d-4.co.za)

# Wedge Range

This horizontal power unit is designed for your smaller boardroom applications with a need for your AV outlets, with the ability to flip up exposing the sockets and allowing the plugs to still be attached once closed.

Standard unit with a choice of 3 modules per unit.

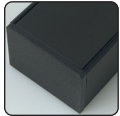
The unit is constructed in aluminium which provides excellent strength to any work surface.

Through wiring to allow for "daisy chain" installations via interconnect leads and splitter block.



## OPTIONS

Standard Body Colours:



### Graphite

Anodised black body with black brush strip.



## MODULES

### Power modules:

- Standby Switch
- Overload switch
- Circuit breaker

### ■ Socket outlets

- South African 16 Amp 3 pin
- South African Dedicated (3 versions)
- South African Compact (SANS 164-2)
- South African Compact Dedicated Sockets (SANS 164-2-1) (3 versions)
- British
- Shucko (Export orders only)

### Data / auxiliary modules:

- Cat 5e
- Cat 6
- USB 3.0 Type C
- USB 2.4 Amp dual charger
- VGA
- F-type
- RCA
- HDMI
- Display port





# Blade Range

Sleek low-profile, modular design customised to meet the individual's needs.

Anodised solid aluminium body for durability and aesthetics.

Standard options 2.50 (Blade I) module and 5.00 and 5.25 (Blade II) module, new custom sizes available on special request.

Ideal for high-end computer workstations.

Through wiring to allow for "daisy chain" installations via interconnect leads and splitter block.



Blade mounting under desk

## MODULES

### Power modules:

- Standby Switch
- Overload switch
- Circuit breaker
- **Socket outlets**
  - South African 16 Amp 3 pin
  - South African Dedicated (3 versions)
  - South African Compact (SANS 164-2)
  - South African Compact Dedicated Sockets (SANS 164-2-1) (3 versions)
  - British
  - Shucko (Export orders only)

### Data / auxiliary modules:

- Cat 5e
- Cat 6
- USB 3.0 Type C
- USB 2.4 Amp dual charger
- VGA
- F-type
- RCA
- HDMI
- Display port



## OPTIONS

### Standard Body Colours:

#### Polar



#### Titanium



### Custom sizes available 0.50 - 8.00 modules



Blade MINI 0.50



Blade MINI 1.00



[www.d-4.co.za](http://www.d-4.co.za)

# Hatch Range

Designed for your larger boardroom applications where access is required from both sides of the unit for that professional look and feel.

The unit is designed with a sleek single or double door access port providing you with direct access to the power source located below the work surface in a cable management tray which swings open for easy access.

Power source is fully customised to meet your individuals needs.

## MODULES

### Power modules:

- Standby Switch
- Overload switch
- Circuit breaker
- **Socket outlets**
  - South African 16 Amp 3 pin
  - South African Dedicated (3 versions)
  - South African Compact (SANS 164-2)
  - South African Compact Dedicated Sockets (SANS 164-2-1) (3 versions)
  - British
  - Shucko (Export orders only)

### Data / auxiliary modules:

- Cat 5e
- Cat 6
- USB 3.0 Type C
- USB 2.4 Amp dual charger
- VGA
- F-type
- RCA
- HDMI
- Display port



Custom brackets can be un-clipped and swung down.



Single door version also available with brush strip.



# Edge Range

Fully customized modular designed power unit clamped to the edge of your workstation with a "C Clamp".

Single and dual power circuits for dedicated applications (two completely independent circuits within a single housing).

Through wiring to allow for "daisy chain" installations via interconnect leads.

Unique "data pass thru" option: presents user data cables in a convenient way while being integrated into the power set.



## MODULES

### Power modules:

- Standby Switch
- Overload switch
- Circuit breaker
- **Socket outlets**
  - South African 16 Amp 3 pin
  - South African Dedicated (3 versions)
  - South African Compact (SANS 164-2)
  - South African Compact Dedicated Sockets (SANS 164-2-1) (3 versions)
  - British
  - Shucko (Export orders only)

### Data / auxiliary modules:

- Cat 5e
- Cat 6
- USB 3.0 Type C
- USB 2.4 Amp dual charger
- VGA
- F-type
- RCA
- HDMI
- Display port



## OPTIONS

### Standard Body Colours:



**Polar**  
Anodised silver post and body with white end caps.



**Graphite**  
Texture powder coated black body with black end caps and silver posts.



**Titanium**  
Anodised silver post and body with black end caps.



[www.d-4.co.za](http://www.d-4.co.za)

# Wing Range

Fully customised modular on desk mounting power unit with single or double post versions.

Cable hidden within mounting posts for clean simple aesthetics.

Ideal for "hot desking" as it eliminates the need for the user to crawl under the desk to find power and data outlets.

Through wiring to allow for "daisy chain" installations via interconnect leads.

Fits standard 60 mm grommet hole for double post and 80 mm grommet hole for single post installations.



## MODULES

### Power modules:

- Standby Switch
- Overload switch
- Circuit breaker

### Socket outlets

- South African 16 Amp 3 pin
- South African Dedicated (3 versions)
- South African Compact (SANS 164-2)
- South African Compact Dedicated Sockets (SANS 164-2-1) (3 versions)
- British
- Shucko (Export orders only)

### Data / auxiliary modules:

- Cat 5e
- Cat 6
- USB 3.0 Type C
- USB 2.4 Amp dual charger
- VGA
- F-type
- RCA
- HDMI
- Display port

## OPTIONS

### Standard Body Colours:



**Polar**  
Anodised silver post and body with white end caps.



**Graphite**  
Texture powder coated black body with black end caps and silver posts.



**Titanium**  
Anodised silver post and body with black end caps.

Custom colours available on request.

60 & 80mm anodised aluminium base plates available



# Spike Range

D4 SPIKE Range brings two key elements to desktop ergonomics. A source of power and light in a single stylish unit.

LED lighting technology saves 75% in energy and last 25% longer than traditional technologies.

Studies show that LED lighting can improve performance of visual and cognitive tasks by 8,3%.

Traditional ceiling based light sources have been used to achieve mandatory light levels (lux) for typical activities such as typing (300 lux) or draft drawing (500 lux).

Dual source lighting allows main light sources to be reduced to the minimum general light level of 100 lux and then introducing only the required level in the exactly localised work by means of an LED task lamp.

Achieving energy saving of up to 40% while providing higher quality light for the work space user.

## SPECIFICATIONS

Dimmable LED Lamp

Lamp height:

**535 mm**

LED Power:

**6 Watt**

LED Luminous Flux:

**440 Lumen**

LED Colour Temperature:

**3000 K**

LED Colour Rendering Index:

**>80 CRI**

LED Life span:

**50 000 hours**

Warranty:

**5 Years**

## OPTIONS

Standard Body Colours:



White



Black



**Dual source lighting:**

- Reduce ambient lighting to 205 lux.
- Resulting in up to 40% energy saving.



Single light source



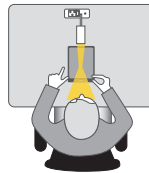
Dual light source

D4 SPIKE ranges offers USB / Power connectivity with a high quality LED task light that is dimmable, single shadow, low glare light for even further ergonomic and energy saving benefits.

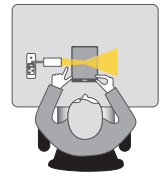
The location of the SPIKE (either to the left or right of the work space) not only convenience for USB Power connection but also goes to further improve the ergonomic condition by eliminating reflective glare from the desktop.

**Importance of dual source lighting location:**

- Eliminates reflective glare from lamp.



Reflective glare



Reflective glare avoided

Source: [www.lumastream.com](http://www.lumastream.com) "Effects of work space lighting technologies on perception, cognition and affective state".



[www.d-4.co.za](http://www.d-4.co.za)

A stylish extensions cord accessory for charging your electronics, ideal for soft seating office spaces. Designed to be tucked into a couch or under a cushion. Patented design. Solid Aluminium Construction.

Two installation options:

- Temporary tuck-in.
- Thru-wire permanent.

A 4 meter cord included.

## MODULE OPTIONS

### Socket Module

- Compact South African socket - Compatible with 2-pin and new 3-pin SA pin patterns.



### USB C Module

- USB - PD 5V/3A (15W) ; 9V/2.22A (20W) ; 12V/1.67A (20W)
- USB - QC 3.0/2.0 5V/3A (15W) ; 9V/2A (18W) ; 12V/1.5A (18W)



### USB A Module

- USB - PD 5V/3A (15W) ; 9V/2.22A (20W) ; 12V/1.5A (18W)
- USB - QC 3.0 QC 3.0/2.0 5V/3A (15W) ; 9V/2A (18W) ; 12V/1.5A (18W)



## COLOUR OPTIONS

### Standard Body Colours:



**Anodised silver body**  
(view show USB edge)

**Powder coated black body**  
(view show Socket edge)

Custom colours and personalised laser engraving available on request, at an additional fee.



# Grid Eco Range

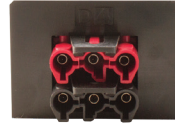
Standard cost-effective power set to suit any office environment with a texture powder coated body and black end caps for strong and robust durability.

Single and dual power circuits for dedicated applications (two completely independent circuits within a single housing).

Through wiring to allow for "daisy chain" installations via interconnect leads and splitter block.

## Installation options:

- On Desk
- Under Desk
- "Peep-through" Desk



## RANGE AVAILABLE



**Type 1**  
Two Standard South African 16 Amp 3 pin sockets.



**Type 2**  
Two Dedicated South African 16 Amp 3 pin sockets.



**Type 3**  
One Standard South African 16 Amp 3 pin socket,  
One Dedicated South African 16 Amp 3 pin socket.



**Type 4**  
Three Standard South African 16 Amp 3 pin sockets.



**Type 5**  
One Dedicated South African 16 Amp 3 pin socket,  
One Standard South African 16 Amp 3 pin socket,  
Two South African compact sockets.



**Type 6**  
Two Dedicated South African 16 Amp 3 pin sockets,  
One Standard South African 16 Amp 3 pin socket.



**Type 7**  
Four Standard South African 16 Amp 3 pin sockets.



**Type 8**  
Four Dedicated South African 16 Amp 3 pin sockets.



**Type 9**  
Two Standard South African 16 Amp 3 pin sockets,  
Two Dedicated South African 16 Amp 3 pin sockets.



**Type 10**  
Two Dedicated South African 16 Amp 3 pin sockets,  
One Standard South African 16 Amp 3 pin socket,  
Two South African compact sockets.



**Type 11**  
Three Dedicated South African 16 Amp 3 pin sockets,  
Two Standard South African 16 Amp 3 pin sockets,  
Two South African compact sockets.



**Type 12**  
Three Standard South African 16 Amp 3 pin sockets,  
Three Dedicated South African 16 Amp 3 pin sockets

# Power Modules



South African 16 Amp 3 Pin socket with Compact South African 16 Amp 3 Pin socket with BLUE power on LED. Available in white and black. Size: 2.00 modules width



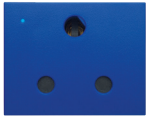
South African 16 Amp 3 Pin socket with Compact South African 16 Amp 3 Pin socket with BLUE power on LED. Available in red. Size: 2.00 modules width



South African 16 Amp 3 Pin socket with BLUE power on LED. Available in white and black. Size: 1.25 modules width



South African Dedicated 16 Amp 3 Pin socket with BLUE power on LED. Available ONLY in RED. Size: 1.25 modules width



South African Dedicated 16 Amp 3 Pin socket with BLUE power on LED. Available ONLY in BLUE. Size: 1.25 modules width



South African Dedicated 16 Amp 3 Pin socket with BLUE power on LED. Available ONLY in BLACK. Size: 1.25 modules width



Twin Compact South African 16 Amp 3 Pin socket with BLUE power on LED. Available in white and black. Size: 1.25 modules width



Compact South African 16 Amp 3 Pin socket with BLUE power on LED. Available in white and black. Size: 0.50 modules width



Twin Compact South African Dedicated 16 Amp 3 Pin socket with BLUE power on LED. Available ONLY in RED. (SANS 164-2-1) Size: 1.25 modules width



Twin Compact South African Dedicated 16 Amp 3 Pin socket with BLUE power on LED. Available ONLY in BLUE. (SANS 164-2-1) Size: 1.25 modules width



Twin Compact South African Dedicated 16 Amp 3 Pin socket with BLUE power on LED. Available ONLY in BLACK. (SANS 164-2-1) Size: 1.25 modules width



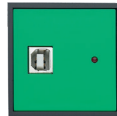
Overload Switch - Power switch as well as thermal overload switch with manual safety reset. Available in blue (standard) and red. (SANS 164-2-1) Size: 0.50 modules width



Shuko socket (FOR EXPORT ONLY). Available in white and graphite grey. Size: 1.00 modules width



Universal 13 Amp 3 Pin socket (FOR EXPORT ONLY). Available in white and metallic grey. Size: 1.00 modules width



Standby Module with power indicator LED. Controlled via standard USB printer cable. Size: 1.00 modules width

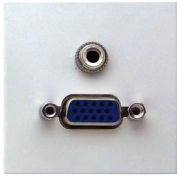


Circuit Breaker Module (MCB). 6 kA capacity. Size: 2.00 modules width





# Data Aux Modules



**VGA + Audio Module (35 cm fly-lead).**  
Available in white and black.  
Size: 1.00 modules width



**Data Module - Keystone pattern**  
Available with CAT 6 shuttered jack.  
Available in white and black.  
(SANS 164-2-1)  
Size: 0.50 modules width



**HDMI Module (35 cm fly-lead).**  
Available in white and black.  
Size: 0.50 modules width



**Data Module - SystiMax pattern**  
Available with CAT 5e, 6 or 6a un-shuttered jack.  
Available in white and black.  
Size: 0.50 modules width



**Display Port (35 cm fly-lead).**  
Available in white and black.  
Size: 0.50 modules width



**Data Module - 30-Mech pattern**  
Available with CAT 5e or 6 un-shuttered jack.  
Available in white and black.  
Size: 0.50 modules width



**RCA Module (35 cm fly-lead).**  
Available in white and black.  
Size: 0.50 modules width



**Data Pass Thru Module - Allows for standard data fly-leads to be presented conveniently for users.**  
Available in white and black.  
Size: 0.50 modules width



**USB Module (35 cm fly-lead).**  
Available in white and black.  
Size: 0.50 modules width



**Data Pass Thru Module Version 2 - Allows for standard data fly-leads to be presented conveniently for users.**  
Available in white and black.  
Size: 0.50 modules width

# USB Super Charger

- D4 High specification 18W conditioning charger.
- D4 fast charging module for mobile devices (3,0 Amp for USB devices).
- Bi-directional USB-A socket.
- Power indicator LED with Auto On/Off.



## FEATURES

- USB-A QC18W fast charging for mobile phones (Example - iPhone X from 0% to 50% in 30 mins)
- Dual Charging technologies - USB Power Delivery (USB-PD) and USB Quick Charge (USB-QC)
- Power overload protection
- Temperature overload protection

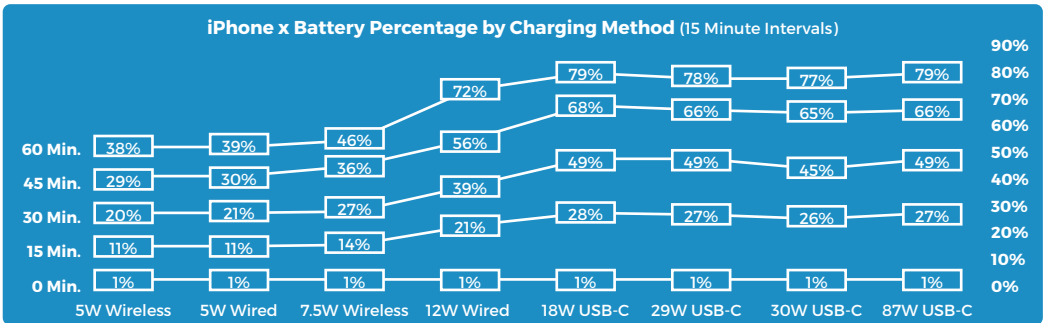
## SPECIFICATIONS

**Output:** USB - PD 5V/3A; 9V/2A; 12V/1.5A  
 USB - QC3.0 output range: 3.6Vdc ~ 12Vdc

Output Mode	Output Voltage	Max. Load	Output Power
Standard Mode	5V dc	3A	15W
Smart Mode (Automatic)	9V dc	2A	18W
	12V dc	1.5A	18W

## APPROVALS

- IEC60950-1
- IEC62368-1
- IEC 61000-3-2
- IEC 61000-3-3
- CISPR 32:2015
- CISPR 35:2016
- NRCS Certification No: 95376/001





## USB - THE PAST

USB standard we designed to transfer data and started being used to charge small electronic devices.

USB 2.0 gave us 2.5W charging then USB 3.0 was capable of 4.5 Watt with USB BC1.2 then 7.5Watt. With these increase in power capabilities data transfer rates also increased exponentially for example from 10 Gig of data in just under 2 minutes on USB 2.0 to less than 20 seconds in USB 3.0.

Most recognizable by the traditional USB Type - A connectors. Later version of USB 3.0 has had blue inserts to identify them.



## USB - THE FUTURE

In 2012 USB Power Delivery (PD) specification was released. Power Delivery is focused on providing the ability for devices to safely and easily draw more power than the 7.5 Watt limit, all the way up to 100 Watts. Along with USB-PD as a power system the traditional USB- Type A connector has also undergone an upgrade to USB Type-C, which is more compact, reversible, support more protocols such as HDMI, VGA at the same time as delivering power up to 100W and data speeds of 10Gbps (that 10 Gig file can be theoretically transferred in 1 second).

USB-PD is set to rival the traditional AC outlet. With electronics increasingly being able to accept higher speed charging via USB-PD and lower power laptops, tables and module phones this technology will roll out faster than any other previous USB upgrade.

USB-PD chargers are intelligent and able to integrate the device being charged as well as the cable delivering the power. This intelligent handshaking sequence profiles the USB-PD system into 5 profiles as well as allowing for bi-directional power delivery.

A battery bank being charged via USB-PD can reverse and become the power source should it need to.

## USB PD → POWER PROFILES

Hand-held devices, today's peripherals	<b>PROFILE 1</b> 5V @ 2A	<b>10W</b> Default start-up profile
Tablets, netbooks, most peripherals	<b>PROFILE 2</b> 5V @ 2A, 12V @ 1.5A	<b>18W</b>
Thinner notebooks, larger peripherals	<b>PROFILE 3</b> 5V @ 2A, 12V @ 3A	<b>36W</b>
Larger notebooks, hubs, docks	<b>PROFILE 4</b> 5V @ 2A, 12V, 20V @ 3A	<b>60W</b> Limit for Micro-B/ AB connector
Workstations, hubs, docks	<b>PROFILE 5</b> 5V @ 2A, 12V, 20V @ 5A	<b>100W</b> Limit for Standard A/B connector

The future of single power source and single cables handling Power, HDMI, Display Port, VGA, Ethernet with speed of 10 Cbit/s all via a single reversible connector, will transform workspaces.



# USB-C 20W Power Delivery Module

Ideal solution for smaller mobile devices such as smart phones and tablets.

The USB-C 20W Power Delivery Module is our best charger for the new iPhone.

This innovative charging technology charges any electronic device without an external power supply unit, while doing so quickly and safely.

Charge a smart phone up to 50% in just 30 minutes.

## FEATURES

- USB-A bi-directional connector.
- Latest USB-C Power Delivery Technology.
- Fast Charging USB-C Power Delivery (PD) and Qualcomm® Quick Charge™(QC).
- Fast Charging USB-A.
- Current and temperature overload protection.
- Module can be integrated into any Poweset series from the D4 range.

## SPECIFICATIONS

**Input :** 20 Watt, 100-240V~, 1.5A, 50/60Hz

**Output :**

- **USB 3.1 PD mode**  
5V⇌3A/9V⇌2.22A(20W)/12V⇌1.67A(20W)
- **Qualcomm® QC 3.0/2.0 mode**  
5V⇌3A(15W)/9V⇌2A(18W)/12V⇌1.5A(18W)



## OPTIONS

- Available in black and white.



## APPROVALS

- South Africa Letter of Authority LOA certificate number: 147660/001
- SANS IEC 60950-1
- CISPIR 32 /35
- IEC62368-1



# USB-C 60W Power Delivery Module

Ideal solution for small to medium sized devices as well as higher-powered notebooks.

This innovative charging technology charges any electronic device without an external power supply unit, while doing so quickly and safely.

Power sharing technology allows the system to share 60 Watts of total power valuable between USB-C PD and QC (maximum 60W) and USB-A (maximum 10W).

## FEATURES

- USB-A bi-directional connector.
- Latest USB-C Power Delivery Technology.
- Fast Charging USB-C Power Delivery (PD) and Qualcomm® Quick Charge™(QC).
- Fast Charging USB-A.
- Current and temperature overload protection.
- Module can be integrated into any Poweset series from the D4 range.

## SPECIFICATIONS

**Input :** 60 Watt, 100-240V~, 1.5A, 50/60Hz

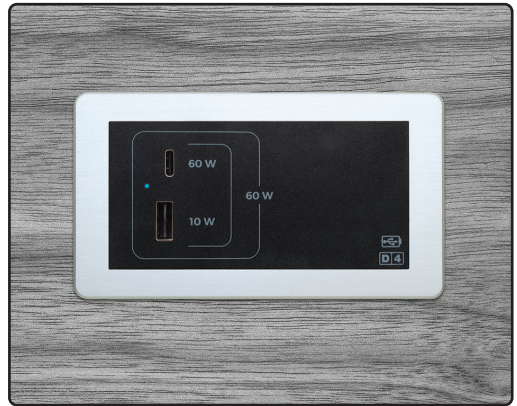
**Output :**

**(USB-C or USB-A used independently)**

- **Type-C :** PD : 5V  $\overline{\text{m}}$ 3A/9V  $\overline{\text{m}}$ 3A/15V  $\overline{\text{m}}$ 3A/20V  $\overline{\text{m}}$ 3A  
QC : 5V  $\overline{\text{m}}$ 3A/9V  $\overline{\text{m}}$ 2A/12V  $\overline{\text{m}}$ 1.5A
- **USB-A :** 5V  $\overline{\text{m}}$ 2.1A

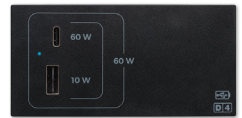
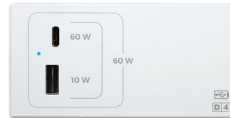
**(USB-C or USB-A used simultaneously)**

- **Type-C :** PD : 5V  $\overline{\text{m}}$ 3A/9V  $\overline{\text{m}}$ 3A/15V  $\overline{\text{m}}$ 3A/20V  $\overline{\text{m}}$ 2.3A  
QC : 5V  $\overline{\text{m}}$ 3A/9V  $\overline{\text{m}}$ 2A/12V  $\overline{\text{m}}$ 1.5A
- **USB-A :** 5V  $\overline{\text{m}}$ 2.1A



## OPTIONS

- Available in black and white.



## APPROVALS

- South Africa Letter of Authority LOA certificate number: 143889/001
- SANS IEC 60950-1
- CISPIR 32 /35
- IEC62368-1



[www.d-4.co.za](http://www.d-4.co.za)

# Qi - Wireless Charging

Wireless charging technology had a slow start with various rival technologies competing.

With the advent of Apple recently selecting the Qi (pronounced "chee") for its iPhones it is expected to accelerate the roll-out of wireless charging.

Qi is similar to how a wireless electric toothbrush recharges. Initially only 2,5 Watt charging were allowed for a relatively slow charge but now 5 Watt and even 10 Watt systems are comparable to wired charges.

Wireless charging is set to take over from wired charging with efficiencies of up 85% already commonplace.

## QI DESKTOP CHARGER

- Foldable Qi Desktop Charger
- Three charge coils for Landscape or portrait orientation charging
- 10 Watt (provided supply USB is USB-QC or USB-PD capable of 18 Watt or greater)
- USB Type-C connection

(to be used with USB charger)



# Qi - Wireless Charging

Wireless charging technology had a slow start with various rival technologies competing.

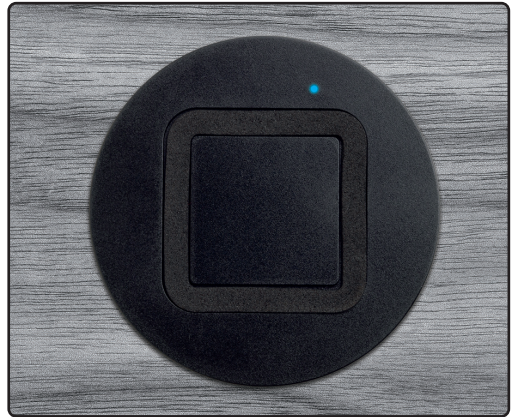
With the advent of Apple recently selecting the Qi (pronounced "chee") for its iPhones it is expected to accelerate the roll-out of wireless charging.

Qi is similar to how a wireless electric toothbrush recharges. Initially only 2,5 Watt charging were allowed for a relatively slow charge but now 5 Watt and even 10 Watt systems are comparable to wired charges.

Wireless charging is set to take over from wired charging with efficiencies of up 85% already commonplace.

## MICRODOT WIRELESS QI CHARGER

- Direct mains powered 220 VAC
- 10 Watt
- Qi Compatible
- Available in Black or White
- Available with direct wired or daisy chain connection
- **Foreign Object Detect (FOD)** - Safety system to protect charger with automatic recovers after 2 min. when object has been removed
- **Dynamic Power Lock (DPL)** - Safety system to shut down when power input below minimum level
- **LED status**
  - **LEDs OFF** - system in Standby mode
  - **Blue LED ON** when power is being transferred and DPL latched
  - **Red LED ON** when DPL not latching
  - **Red LED FLASHING FOD** triggered



Cut-out size  $\phi$  58mm. Max. top thickness 35mm.



[www.d-4.co.za](http://www.d-4.co.za)

## POWER CABLES



Supply Cable Standard



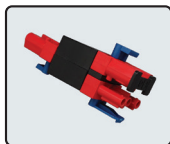
Supply Cable Dedicated



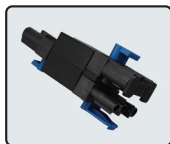
Interconnect Standard



Interconnect Dedicated



Splitter Block Standard



Splitter Block Dedicated

## D4 USB CABLES

Anti-theft security clip moulded onto cable.  
Cotton Nylon cable braid with Aluminium connector.



- 3 in 1 USB Cable
  - Lightning
  - Micro
  - Type-C
- Rating - 2.4A / 5V / 12W
- 1,2 Meter



- USB Type-C to Type-C
- Rating - 3.0A / 16V / 16W
- 1,0 Meter



- USB Type-C to Lightning
- Rating - 2.0A / 9V / 18W
- 1,0 Meter

## SMALL CABLE HOLDER



## LARGE CABLE HOLDER





# Cable Management

## VERTICAL CABLE DUCT (825H)



- 855 mm long cable duct with 2 separate cable ways.
- One for power and one for data.
- Sturdy metal base plate.

## HORIZONTAL CABLE RUNWAY



- 600 mm cable tray with 2 separate compartments.
- Cable exit points every 50mm.

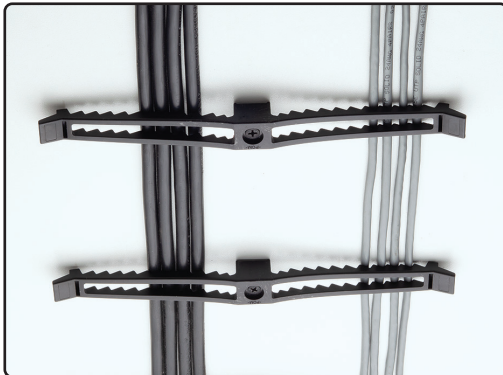
## CABLE CLIP



- 250 mm wide twin arm cable cleat.
- One side for power and one side for data.
- Recommend mounting first and last clip 100 mm from edge of the desk and then every 350 mm.

## BRAIDED CABLE WRAP

- Flexible material with zip.
- Length: 650mm.



[www.d-4.co.za](http://www.d-4.co.za)



# ELECTRICAL FURNITURE



D4 is a brand of Design 4 Technologies (Pty) Ltd



Design 4 is a level 2 B-BBEE company.



D4 have a ISO 9001 rating for Quality Management.



R2D4 - D4's one stop shrewd laboratory manufacturing Bot, 24/7 to maintain excellence in quality and service.



D4's ranges are manufactured from high grade anodized aluminium, designed with an emphasis on aesthetics and compactness. Metallic housings give the power sets a robust durability.



Every D4 Power set has a unique track-able serial number for traceability.



[www.d-4.co.za](http://www.d-4.co.za)



# ELECTRICAL FURNITURE



D4 offers a Future Proof option on projects where Power sets can be return and recycled from the old RSA plug standards into the new Compact RSA plug standard (Small re-cycling fee applies)



D4 offers a 1 year manufactures "carry-in" warranty on all power sets and cables. In addition a extend "on-site" warranty to 3 years is offered on projects where D4 does the installation.

(Conditions apply - Policy document available on request)



Design 4 is an associate member of Safe House Association.

The association has been formed to combat the prevalence of unsafe products and services in South Africa by informing buyers and others that influence buying decisions about the criteria by which to assess these products and services and exposing specific cases of sub-standard products and practices. SAFEhouse is not a consumer body and is not a forum for consumer complaints however.

SAFEhouse welcomes justified, safety-related complaints from any party, including commerce, industry, government and individuals, about members' and non-members' electrical products and services.



Design 4's entire range is approved by the National Regulator for Compulsory Standard (NRCS).

In 2008 with the promulgation of the new Standards Act and the NRCS act. This effectively separated the NRCS from SABS where both organisations operate independently and their management boards report directly to the Minister of Trade and Industry (DTI).

Thus in today's terms, electrically speaking: SABS approval no longer means NRCS approval.



Design 4's D4 ranges are proudly 100% South African Designs. D4 products proudly have a local content of 75%.

All of D4's products are assembled in South Africa.



[www.d-4.co.za](http://www.d-4.co.za)



## **CONTACT DETAILS:**

**Head Office: +27 11 701 2024**

**E-Mail: [info@design4.co.za](mailto:info@design4.co.za)**

**Web: [www.d-4.co.za](http://www.d-4.co.za)**